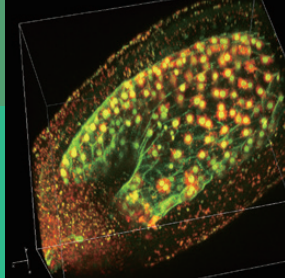


Biological Science Program

Bachelor of Science/ Bachelor of Agricultural Sciences



Program Outline

The curriculum is designed to provide both a breadth of knowledge in the natural sciences and an opportunity to explore areas of interest in greater depth through hands-on experience. Students are strongly encouraged to take courses across various disciplines to provide a broad knowledge base that is becoming increasingly important in modern-day science. Key features of the program are an extensive series of laboratory courses from first year and a graduation research in a laboratory of choice.

The program provides an excellent starting ground for entering broad spectrum of career paths, including basic biological research, applied research, medical professions, and biology-related careers in the food and pharmaceutical industries.



School of Science

Researchers at the Division of Biological Science, School of Science are motivated by a simple but intense curiosity for the wonders of life. The importance placed on intellectual enthusiasm and research freedom is reflected by the diversity of research groups and by the focus of the courses offered on basic biology. They can choose from research at the molecular level, cellular level, and higher systems level in the 15 research groups within the Division and in affiliated institutes such as the Institute of Transformative Bio-Molecules (ITbM) and the Center for Gene Research. Come and experience the excitement!

School of Agricultural Sciences

In the Division of Applied Biosciences emphasis is placed on advanced research and the development of human resources with highly specialized skills. Some of the highlights of the Applied Bioscience program include:

- A one-year intensive laboratory training course during the 4th and 5th semesters, which aims to familiarize students with the basic laboratory techniques in both Chemistry (Inorganic, Organic, Biochemistry) and Biology (Molecular Biology, Microbiology, Cell Biology, Molecular Genetics).
- Visiting different laboratories and research groups dealing with diverse fields of study ranging from bioorganic chemistry, food and nutrition science, cell biology, plant science and technology, microbiology and biotechnology.

Notes:

Contact Information

Admissions Office, International Programs

Tel: +81-52-747-6556

Fax: +81-52-747-6526

Furo-cho, Chikusa-ku, Nagoya 464-8601 Japan

E-mail: apply@g30.nagoya-u.ac.jp

Printed in March 2019

